

MANUAL WASTEWATER TREATMENT

Ringwood TT-125

Ringwood's wastewater treatment units optimize the use of clay based flocculants to clarify industrial wastewaters.

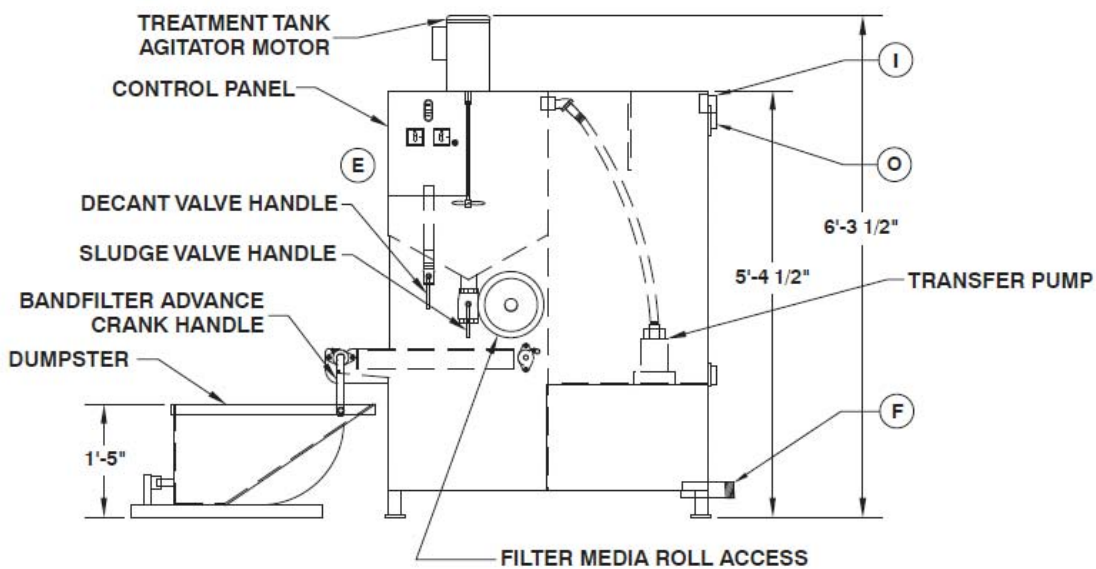
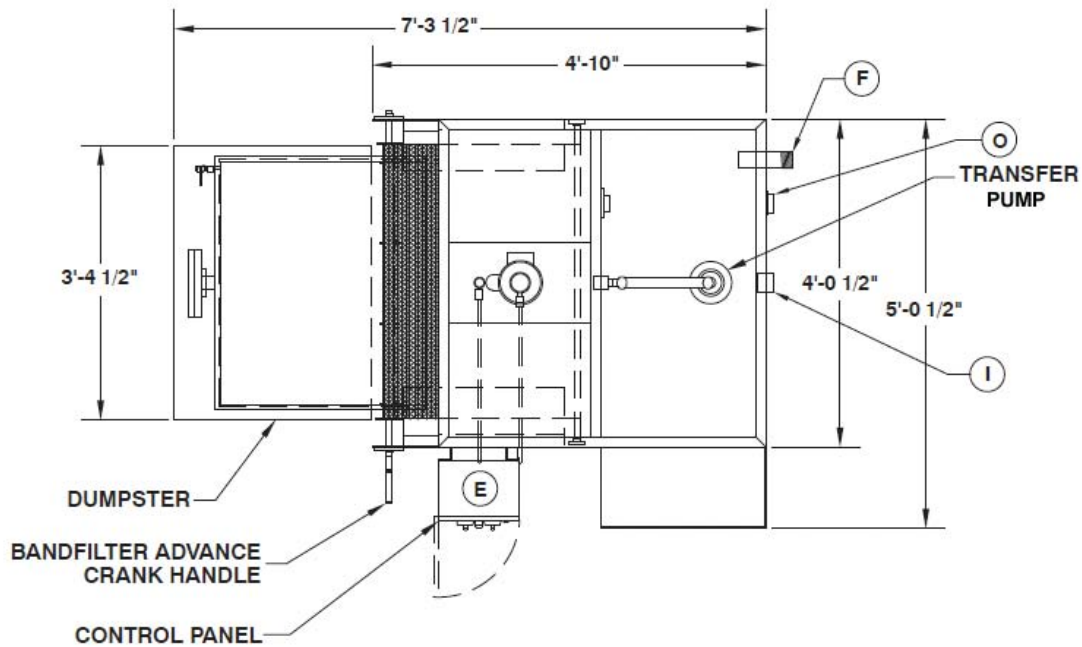


Standard Features:

- Economical with Small Footprint Manual System
- Maximum Throughput: 180 gph
- 200-Gallon Holding Tank
- 100-Gallon Treatment Tank
- 100-Gallon Clean Water Tank
- 1/4 Cubic Yard Dumpster
- Pre-Plumbed Transfer Pump (Holding Tank to Treatment Tank)
- U.L. Approved Control Panel
- 1 Horsepower Heavy Duty Agitator with Jet Basket
- Equipment Measurements: Length: 5'; Width: 5'2"; Height: 6'4"; Weight: Approximately 1,100 lbs.

Optional Features:

- Influent Pump
- Effluent Pump
- Belt Oil Skimmer for Holding Tank
- Stainless Steel Construction



Service Requirements:

- E** 115 VAC, 20 AMP, Grounded Single Phase Power for Control Panel Plug.
- F** 2" MNPT Discharge to Sewer Connection.
- I** 2" FNPT Influent Water Connection.
- O** 2" FNPT Holding Tank Overflow Connection.

RCM Deburring, Inc.
26893 Bouquet Canyon Rd.
Suite C-172
Santa Clarita, CA 91350

www.rcmdeburring.com
email: sales@rcmdeburring.com
telephone: 661 • 296 • 9611
fax: 661 • 296 • 9184